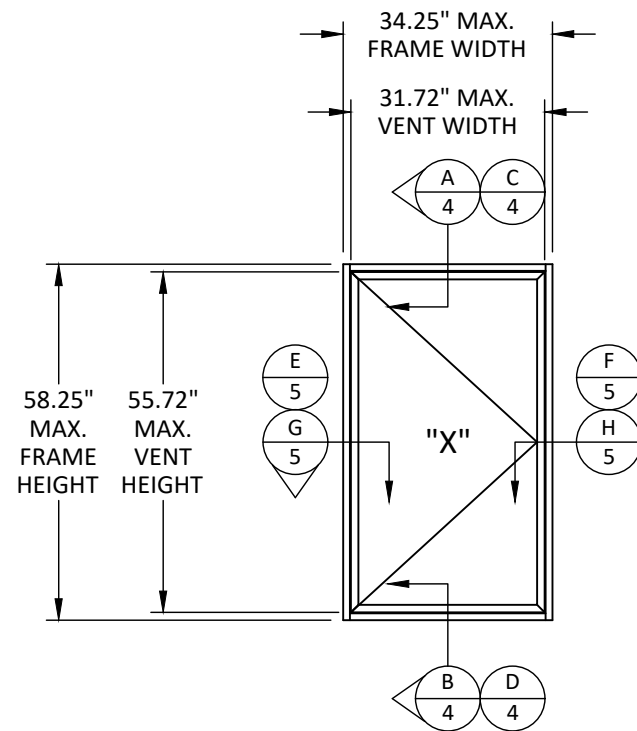




# ELEVATION, ANCHOR LAYOUT, & DESIGN PRESSURE TABLE



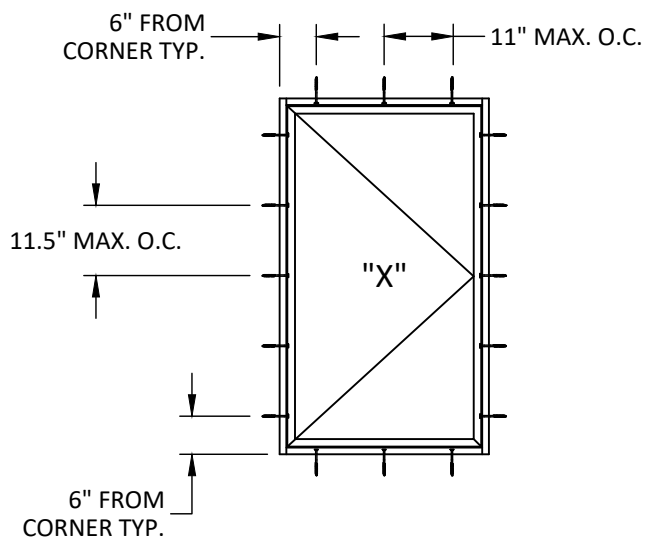
2301 EAST VERNON AVE.  
VERNON, CA 90058  
PH: (323) 771-9819



**ELEVATION**

DESIGN PRESSURE (PSF)			
NOMINAL DIMS.		"X" CONFIGURATION	
FRAME WIDTH 'in.'	FRAME HEIGHT 'in.'	EXT. (+)	INT. (-)
16.25	34.25	60.0	60.0
22.25		60.0	60.0
28.25		60.0	60.0
34.25		60.0	60.0
40.25		51.1	51.1
46.25		44.4	44.4
52.25	40.25	39.3	39.3
16.25		60.0	60.0
22.25		60.0	60.0
28.25		60.0	60.0
34.25		60.0	60.0
40.25		51.1	51.1
46.25	46.25	44.4	44.4
49.25		41.7	41.7
16.25		60.0	60.0
22.25		60.0	60.0
28.25		60.0	60.0
34.25		60.0	60.0
40.25	51.1	51.1	
42.25	48.6	48.6	

DESIGN PRESSURE (PSF)			
NOMINAL DIMS.		"X" CONFIGURATION	
FRAME WIDTH 'in.'	FRAME HEIGHT 'in.'	EXT. (+)	INT. (-)
16.25	52.25	60.0	60.0
22.25		60.0	60.0
28.25		60.0	60.0
34.25		60.0	60.0
37.25	58.25	55.2	55.2
16.25		60.0	60.0
22.25		60.0	60.0
28.25		60.0	60.0
34.25	64.25	60.0	60.0
16.25		60.0	60.0
22.25		60.0	60.0
28.25		60.0	60.0
30.25	70.25	60.0	60.0
16.25		60.0	60.0
22.25		60.0	60.0
28.25		60.0	60.0



**ANCHOR LAYOUT  
THRU FRAME**

## HARDWARE SCHEDULE

HARDWARE TYPE	DESCRIPTION
HURRICANE CAM HANDLES	THREE CAM HANDLES 12" FROM EACH INTERIOR CORNER AND CENTERED. SECURED WITH TWO (2) #10 X 1/2" PFH SCREWS AND A 3/16" ALUMINUM SPACER.
HURRICANE STRIKES	THREE STRIKES 12" FROM EACH INTERIOR CORNER AND CENTERED. SECURED WITH TWO (2) #10 X 3/8" PFH SCREWS.
TRUTH EGRESS HINGES	TWO (2) HINGES SECURED TO THE FRAME WITH THREE (3) #10 X 1/2" PRH SCREWS AND TO THE SASH RAILS WITH #10 X 3/8" PRH SCREWS.

TITLE: SERIES IPT-200 CASEMENT WINDOW (WZ3) (IMPACT)

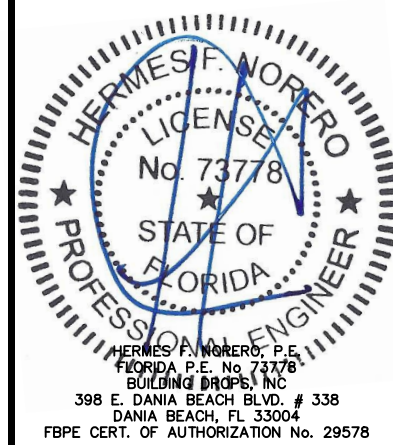
ELEVATION, ANCHOR LAYOUT, & DESIGN PRESSURE TABLE

PREPARED BY: **BUILDING DROPS, INC.**  
398 E. DANIA BEACH BLVD., STE. 338  
DANIA BEACH, FL 33004  
PH: (954)399-8478  
FAX: (954)744-4738  
WEB: www.buildingdrops.com



REMARKS	BY	DATE

THE INSTALLATION DETAILS DESCRIBED HEREIN ARE GENERIC AND MAY NOT REFLECT ACTUAL CONDITIONS FOR A SPECIFIC SITE. IF SITE CONDITIONS CAUSE INSTALLATION TO DEVIATE FROM THE REQUIREMENTS DETAILED HEREIN, A LICENSED ENGINEER OR ARCHITECT SHALL PREPARE SITE SPECIFIC DOCUMENTS FOR USE WITH THIS DOCUMENT.



HERMES F. MORERO, P.E.  
FLORIDA P.E. No. 73778  
BUILDING DROPS, INC.  
398 E. DANIA BEACH BLVD., # 338  
DANIA BEACH, FL 33004  
FBPE CERT. OF AUTHORIZATION No. 29578

FL #: **FL40953**

DATE: **01.31.22**

DWG. BY: <b>SH</b>	CHK. BY: <b>HN</b>
--------------------	--------------------

SCALE: **NTS**

DWG. #: **ARC003**

SHEET: **2** OF 6



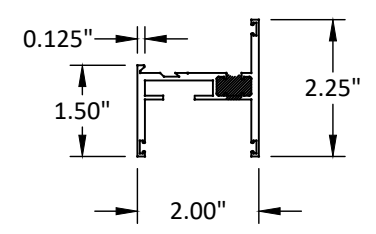




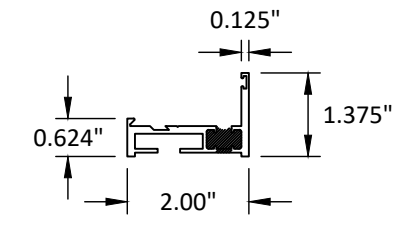
s:\projects\arcadia, inc\lbc-22-0129.1 - lbc submittal - tc470 aluminum storefront, opg1900 curtain wall system, l200 casement window, ws512 entrance door, ms362 entrance door.dwg\lbc003.dwg 2/14/2022 3:34 PM

**BILL OF MATERIALS**

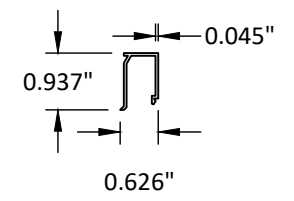
ITEM	PART No.	DESCRIPTION	MATERIAL	MANUF./SUPPLIER/REMARKS
1	WTH-01	FRAME HEAD, SILL, & JAMB (LONG LEG)	6063-T6	ARCADIA INC.
2	WTH-02	FRAME HEAD, SILL, & JAMB (SHORT LEG)	6063-T6	ARCADIA INC.
3	WWB-03	GLAZING STOP	6063-T6	ARCADIA INC.
4	WTT-02	SASH RAIL	6063-T6	ARCADIA INC.
5	E260	GLAZING GASKET	E.P.D.M	VIP RUBBER
6	V994	GLAZING TAPE	-	NORTON
7	331	EGRESS HINGE	STAINLESS STEEL	TRUTH HARDWARE
8	162-001	CAM LOCK	STAINLESS STEEL	BRONZE CRAFT
9	282-055	LOCK STRIKE	STAINLESS STEEL	BRONZE CRAFT
10	S5051-5	WEATHER-STRIP	-	VIP RUBBER



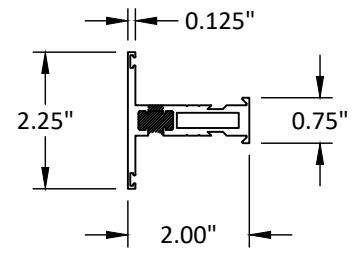
**1** FRAME (LONG LEG)  
6063-T6



**2** FRAME (SHORT LEG)  
6063-T6



**3** GLAZING STOP  
6063-T6



**4** SASH RAIL  
6063-T6

2301 EAST VERNON AVE.  
VERNON, CA 90058  
PH: (323) 771-9819

TITLE: SERIES IPT-200 CASEMENT WINDOW (WZ3) (IMPACT)  
BILL OF MATERIALS AND COMPONENTS

PREPARED BY: BUILDING DROPS, INC.  
398 E. DANIA BEACH BLVD., STE. 338  
DANIA BEACH, FL 33004  
PH: (954)399-8478  
FAX: (954)744-4738  
WEB: www.buildingdrops.com

REMARKS	BY	DATE

THE INSTALLATION DETAILS DESCRIBED HEREIN ARE GENERIC AND MAY NOT REFLECT ACTUAL CONDITIONS FOR A SPECIFIC SITE. IF SITE CONDITIONS CAUSE INSTALLATION TO DEVIATE FROM THE REQUIREMENTS DETAILED HEREIN, A LICENSED ENGINEER OR ARCHITECT SHALL PREPARE SITE SPECIFIC DOCUMENTS FOR USE WITH THIS DOCUMENT.

HERMES F. NORERO, P.E.  
FLORIDA P.E. No. 73778  
BUILDING DROPS, INC.  
398 E. DANIA BEACH BLVD. # 338  
DANIA BEACH, FL 33004  
FBPE CERT. OF AUTHORIZATION No. 29578

FL #: **FL40953**

DATE: **01.31.22**

DWG. BY: **SH**      CHK. BY: **HN**

SCALE: **NTS**

DWG. #: **ARC003**

SHEET: **6** OF 6